

Double Eco hob 2x3.5 kW

Induction appliance with 2 Eco round coils and patented SlideControl technology

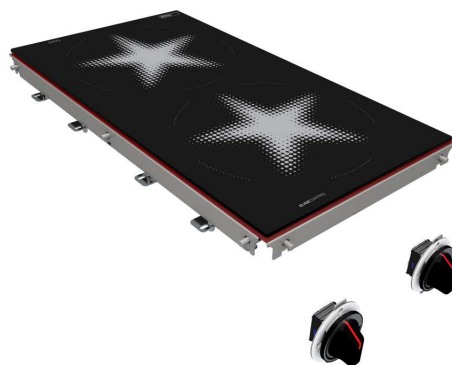
Power brought straight to the point

The Eco induction hob is designed for cooking with just one pan. It's an ideal choice wherever high power levels are required: by producing heat quickly for a short period, it's perfect for flash frying and cooking large quantities.

- Ideal for pans up to 28 cm
- Range 260 mm
- Central pot detection and temperature monitoring

Technical data:

Dimensions:	356 x 656 mm
Output:	2 x 3.5 kW
Connector:	1x 230 VAC
Control:	2 controls
Monitoring:	Central temperature monitoring
Anschluß:	1x 230 VAC
Hobs:	2x Eco round coils Range 260 mm
Adjustment:	Freely adjustable power control



[Product weblink](#)

MENU SYSTEM AG
Oberstrasse 222
CH-9014 St. Gallen
Switzerland

T: +41 71 272 51 00
info@menusystem.ch
www.menusystem.ch

MENU SYSTEM Germany GmbH
Turmstrasse 4
D-78467 Konstanz
Germany

T: +49 1805 880558-10
info@menusystem.de
www.menusystem.de

MENU SYSTEM Austria GmbH
Steinebach 18
AT-6850 Dornbirn
Austria

T: +43 55 72 39 48 00
info@menusystem.at
www.menusystem.at