

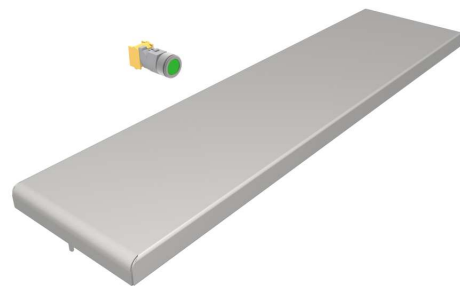
# Heated folding tray

Heavy-duty with cooking suite contour including single-handed operation

- Can be heated up to 85°C
- Robust mechanism

## Technical data:

Dimensions: Width: 300 mm or 400 mm  
Depth: 600 mm - 1700 mm  
Thickness: 48 mm  
Output: Depending on the dimensions from 0.5 kW  
Connector: 1x230 VAC  
Anschluß: 1x230 VAC



[Product weblink](#)

MENU SYSTEM AG  
Oberstrasse 222  
CH-9014 St. Gallen  
Switzerland

T: +41 71 272 51 00  
info@menusystem.ch  
www.menusystem.ch

MENU SYSTEM Germany GmbH  
Turmstrasse 4  
D-78467 Konstanz  
Germany

T: +49 1805 880558-10  
info@menusystem.de  
www.menusystem.de

MENU SYSTEM Austria GmbH  
Steinebach 18  
AT-6850 Dornbirn  
Austria

T: +43 55 72 39 48 00  
info@menusystem.at  
www.menusystem.at