

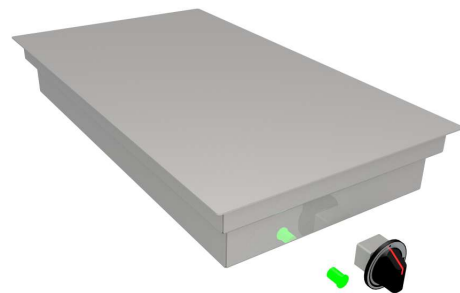
Hot plate 400/600

MS-WHPL 400

Integrated flush with the surface and resistant to warping, the hot plate can be used for preparation, keeping food warm or even as a work surface.

Technical data:

Dimensions: 400 x 600 mm
Output: 0.4 kW
Connector: 1x230 VAC
Heating zone: 1 heating zone
30° - 100°C
Control: 1 control unit
Anschluß: 1x230 VAC
Adjustment: Freely adjustable power control



[Product weblink](#)

MENU SYSTEM AG
Oberstrasse 222
CH-9014 St. Gallen
Switzerland

T: +41 71 272 51 00
info@menusystem.ch
www.menusystem.ch

MENU SYSTEM Germany GmbH
Turmstrasse 4
D-78467 Konstanz
Germany

T: +49 1805 880558-10
info@menusystem.de
www.menusystem.de

MENU SYSTEM Austria GmbH
Steinebach 18
AT-6850 Dornbirn
Austria

T: +43 55 72 39 48 00
info@menusystem.at
www.menusystem.at